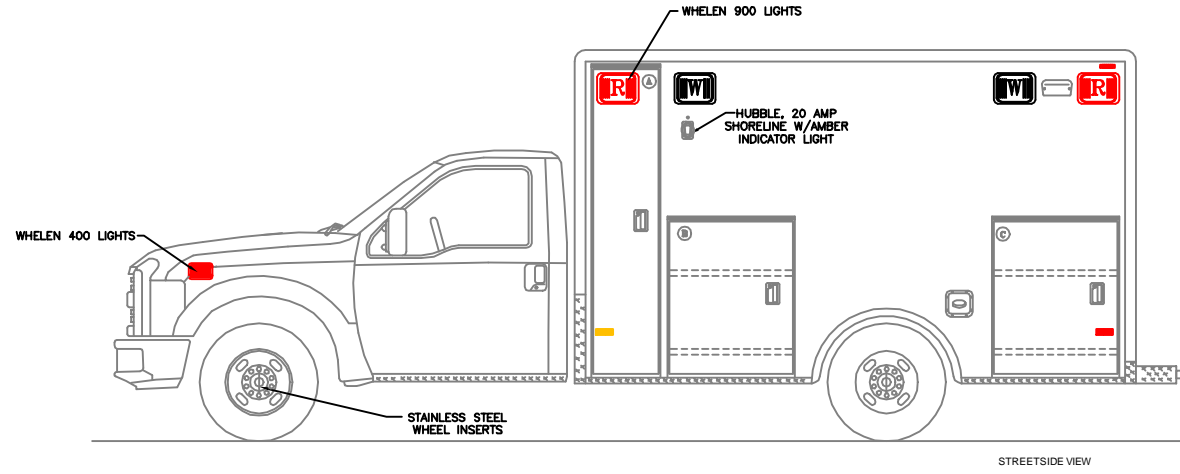
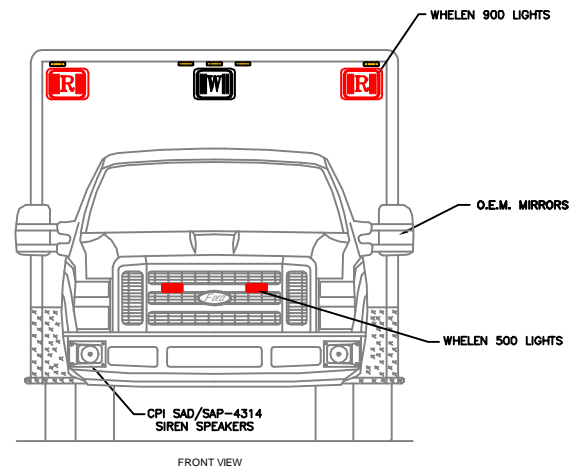
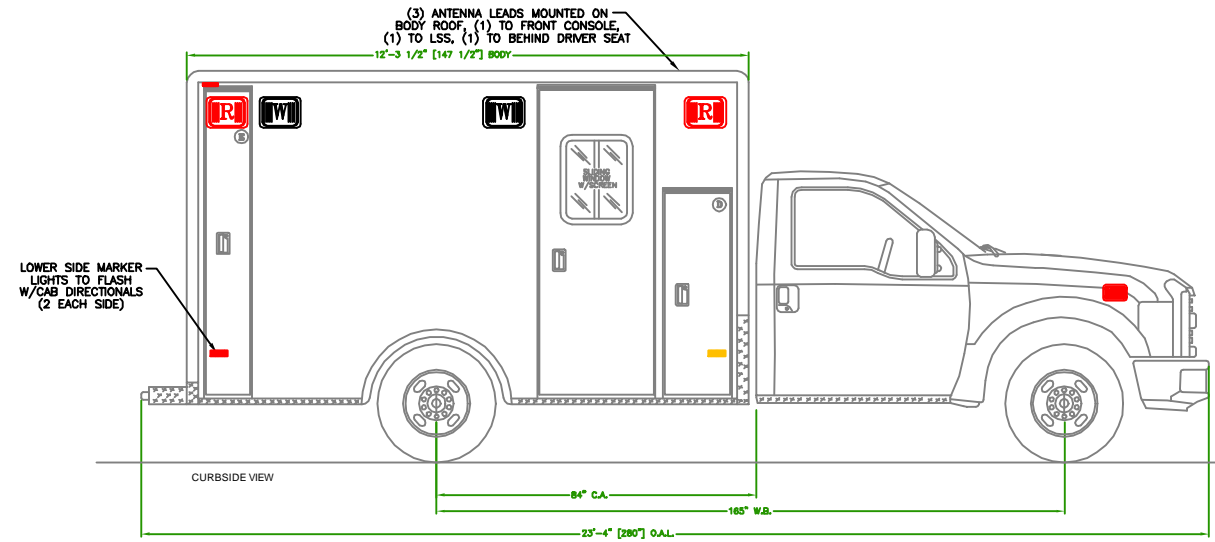
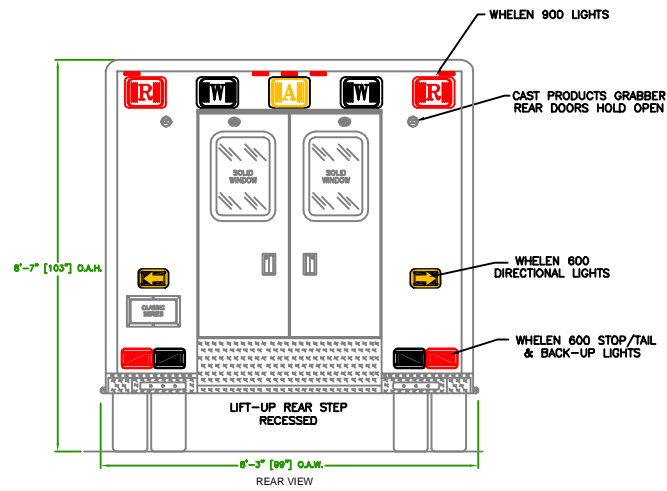


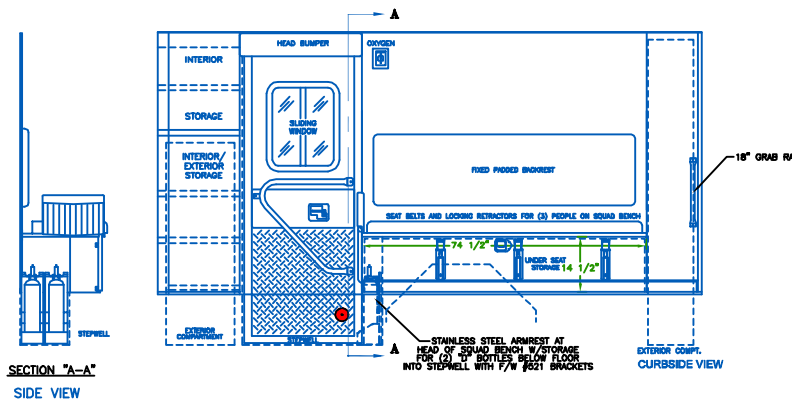
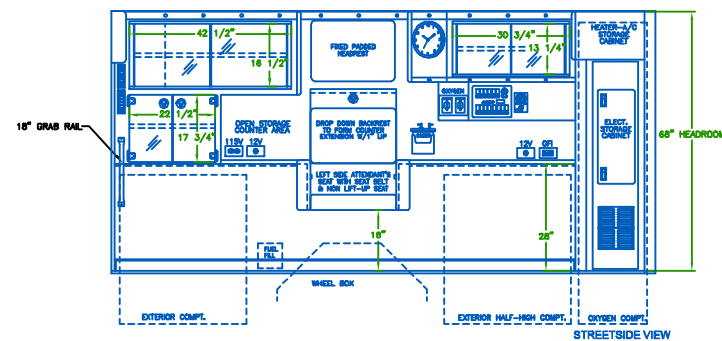
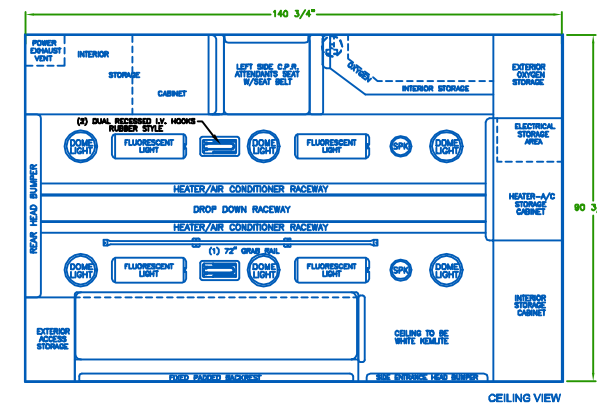
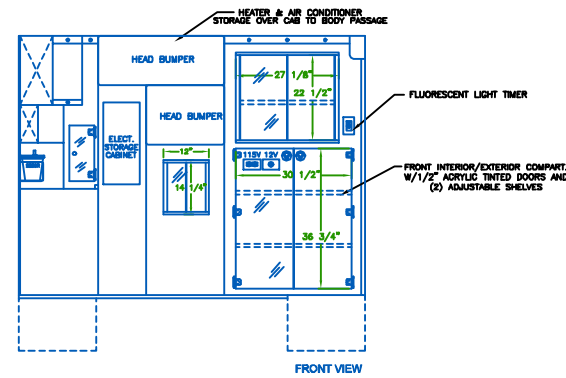
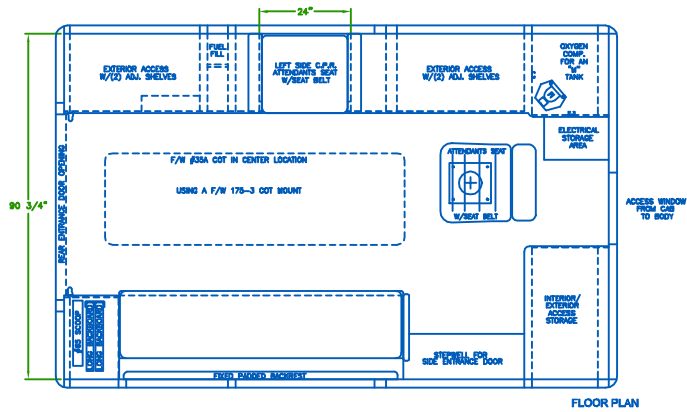
CUSTOM DESIGNED FOR
CLASSIC SERIES F-350
 BY
P.L. CUSTOM
 EMERGENCY VEHICLES



COMPARTMENT DESCRIPTIONS				
	WIDTH	HEIGHT	DEPTH	PURPOSE
(A)	17	79	21	OXYGEN STORAGE
(B)	33	39	20	EXTERIOR STORAGE
(C)	33 7/8	39	20	EXTERIOR STORAGE
(D)	17	52	20	INTERIOR/EXTERIOR ACCESS STORAGE
(E)	12	79	21 1/4	BACKBOARD STORAGE
	29	76		SIDE ENTRANCE DOOR
	46 1/4	54 5/8		REAR ENTRANCE DOORS
ALL DIMENSIONS APPROXIMATE				



INTERIOR
 DIMENSIONS
 HEIGHT 68"
 LENGTH 140"
 WIDTH 90"



APPROVAL	
TITLE	DATE
CUSTOMER APPROVAL	
DATE	

- NOTES:
- 1) DRAWINGS ARE FOR REPRESENTATIONAL PURPOSES ONLY.
 - 2) ALL DIMENSIONS SHOWN ARE APPROXIMATE.
 - 3) EXTERIOR COMPARTMENT DIMENSIONS REFLECT WALL TO WALL MEASUREMENTS. PASS THROUGH OPENINGS WILL BE SMALLER.
 - 4) INTERIOR CABINET DIMENSIONS REFLECT THE CABINET OPENING. PASS THROUGH OPENINGS WILL BE SMALLER.
 - 5) DIMENSIONS FOR OVERALL HEIGHT AND OVERALL LENGTH ARE APPROXIMATE UNTIL THE CHASSIS IS BUILT AND RECEIVED AT OUR FACTORY.



"NOTICE"
 The drawing and data thereon shall not be duplicated, used or disclosed to others for procurement or manufacturing purposes, except as otherwise authorized by contract, without written permission of P.L. CUSTOM BODY & EQUIPMENT CO., INC. We reserve the right to make changes at any time, without notice, in materials, equipment & specifications. Written specifications take precedence over drawings which are for clarity only. All reproductions shall bear this notice.

DWG NO.	CLASSIC SERIES
CUSTOMER	CLASSIC F-SERIES
ISSUE NO.	1-28 OF 24 OF 24 ISSUES
DO NOT SCALE DRAWING	
DATE	3/2010
SCALE	3/4" = 1'-0"
REV	0001
REV	A0000